

INON

NYTT HUS TIL CANON EOS R5!



MARIN FOTO

Knappevegen 24, 5337 RONG - NORWAY

Tlf: 56 38 74 77 Mobil: 92 02 32 48

www.marinfoto.no
marin@uvfoto.com

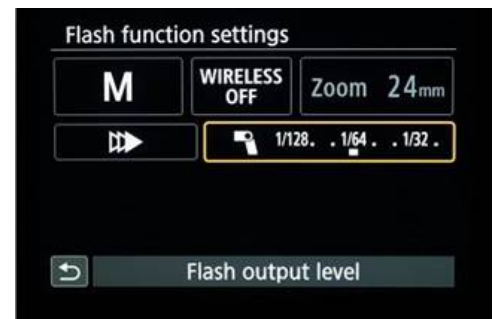
TTL CONVERTER

Most advantageous feature is INON original TTL Converter. As the converter is developed and calibrated precisely for underwater environment based on INON strobe protocol, it delivers highly accurate TTL exposure.



TTL converter delivers successful result for rear curtain sync as well

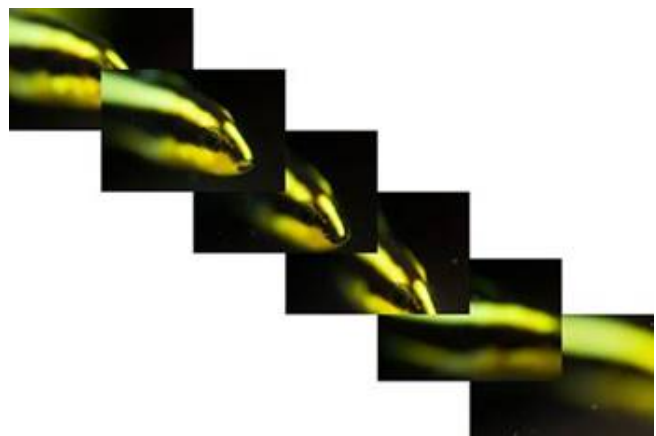
The converter allows to control strobe's output manually FROM camera. No need to hands off housing to set flash output on strobe not to miss the right moment to capture with different lighting effects.



HIGH SPEED CONTINUOUS SHOOTING

Unlike Manual flash mode, the converter provides accurate exposure and supports high speed continuous shooting “12 shots/sec.*”

The TTL converter strives less power consumption enabling to operate 100,000 shots plus only by two CR2032 coin cells.



High speed continuous shooting demonstration underwater. Click the thumbnail navigate to YouTube.



VACUUM LEAK SENSOR (PAT. P)

PAT.P leak sensor ensures housing sealing in 5 minutes before diving.

INON unique program switching between pre-dive/dive modes not to make false warning during dive.



Click the thumbnail navigate to YouTube.



QUICK MOUNT

The housing is equipped with a quick mount attachment allowing quick switch between horizontal/vertical camera orientation.

As lighting position remains same, shooting vertical composition with appropriate lighting.

The quick system also allows low angle shot with vertical composition.



Click the thumbnail navigate to YouTube.



S-MRS PORT

Patented MRS control system further evolved.

The second generation MRS offers less rattle and play enabling to utilize focus peaking function of the camera when focusing manually.



VIEWFINDERS

Optional viewfinders provide same magnification as camera's viewfinder (1.0x) and extends its eye-point.

Two options are available: "Straight Viewfinder Unit II7" or angled "45 degree viewfinder Unit III" to choose depending on shooting conditions.



LIGHTWEIGHT, COMPACT ALUMINUM BODY

Made from corrosion resistance aluminum alloy by ultraprecise cast manufacturing technique to fuse design, weight and durability in higher dimension.

The cast manufacturing technique enables thin body plate with complicated curved design which is not possible with machining.



TTL converter, vacuum leak sensor, handles, tray, quick mount brackets,
ALL these features are STANDARD.



SUPPORTED LENSES:

Fish-eye

Canon RF35mm F1.8 MACRO IS STM

Canon EF8-15mm F4L Fish-eye USM

Macro

Sigma 70mm F2.8 DG MACRO

Canon RF85mm F2 MACRO IS STM

Canon RF100mm F2.8 L MACRO IS USM

Canon EF100mm F2.8L Macro IS USM

